

MAJOR 3-DAY ONLINE AUCTION



COMPLETE CLOSURE OF A 2,000,000 SQ. FT. SBQ STEEL MILL

FEATURING:

- Bar-in-Coil Line
- Moeller Neumann Continuous Rolling Mill
- Roll Bar Straighteners
- Bar Peeler
- Chem & Metrology Lab
- Mannesmann Demag 220-Ton Electric Arc Furnace
- Material Handling
- Machine Shop
- Plant Support
- Transformers
- Large Quantity of MRO Spares / Consumables
- Overhead Bridge Cranes

BIDDING CLOSURES: April 8, 9, & 10, 2026, at 10am CT Each Day

PREVIEW: April 6, 7, & 8, 9am–5pm CT Each Day

LOCATION: 5 Cut Street, Alton, IL 62002

Auction Managed Jointly by:



203.313.8935
gagroup.com



860.623.9060
crgllc.com

William Firestone, Auctioneer, Illinois Auction License #441000584

MOELLER & NEUMANN CONTINUOUS ROLLING MILL (Bar Capacity 3/4 to 3.9")

• **MOELLER NEUMANN CONTINUOUS ROLLING MILL**, with a bar capacity Diameters :0.750" to 3.9" Length 16' to 60', (Capable of Rounds, Round-cornered Squares, Hex, and Bar-in-coil), consisting of Charge Table with Unscrambler & Index Table, Allen Bradley CTR, Natural Gas Fired Pre-Heat Furnace w CTR, Birdsboro 5-Stand Billet Breakdown Mill , Blaw Knox Entry Pinch Roll, Blaw Knox #1 Shear, Moeller Neumann Roughing Mill with (4) Neumann 16" x 27 1/2" Vertical & Horizontal 2 High Mill Stands w/ 600 HP Dc Motors with Electric Controls, Moeller Neumann Intermediate Mill with (5) Neumann 16" x 27 1/2" & 15" x 24" Vertical & Horizontal 2 High Mill Stands w/ 500-600 HP Dc Motors & Electric Controls & (3) Neumann 2 High Mill Stands, (2) 2017 Lap Model RDMS 120-4 Measuring Machines, Cold & Hold Infeed Table 26' x 80', Blaw Knox Shear 500 Ton 2" Round Cap 175' Bar Cooling Bed & Shuffle Table, Advanced Machine Design 4" Hydraulic Bar Shear with Bar Table, (6) GE Transformers, Rockwell Automation Overall Line PLC Controls, Shipping Station; with 60' Run Out Table, Cooling System; with (5) 150 hp Pumps, Spare Mill Stands; Rolls; Crop Shears; Pinch Rolls; Transfer Rolls; Feed Tables; Motors; PLC and Solid State Controls; Burners; Hydraulic and Cooling Systems; Hot and Cold Well Pumps; Pump House Scale Drag System; Process Piping; Valves; Controls; (3) Hot Wells; (3) Cold Wells; Cooling Tower



Birdsboro 5-Stand Billet Breakdown Mill



Overview of Moeller Neumann Continuous Rolling Mill

Auction Powered by:
BidSpotter



26 W x 80 Ft L Billet Infeed Hot & Cold Table



Rockwell Automation Control Room



2 Available

Lap RDMS 120-4 Measuring Machines



12 Assorted Mill Stands w/DC Motors Available

(4) Neumann 16" x 27 1/2" Vertical & Horizontal (2) High Mill Stands w/600 HP Dc Motors



View of .750" to 3.9" Tooling



Advanced Machine Design 4" Hydraulic Bar Shear

Auctioneer will consider pre-auction offers on select items, please contact Paul Brown at (203) 313-8935, or pbrown@gagroup.com

BLAW-KNOX 14" DUAL REEL BAR-IN-COIL LINE

- **BLAW-KNOX 14" DUAL REEL BAR-IN-COIL LINE**, 0.750" to 1.812"D Bar, 6,000 Lb. Maximum Coil Weight; with (2) Fabris Coiler Entry Systems, with Delivery Troughs; 2-Strand Water Box; Switch; 2-Strand Trough; Anti-Twist Guides; Delivery Troughs; Pinch Roll Guides; Rollerized Turndown; Cross Pusher; Push-Off Assemblies; Coil Sweep; Flat Top Cooling Conveyor and Elevator; Coil Upender; Star, Wheel 6-Arm Turnstile; Coil Loader Unit; Hydraulic Power Supplies; Electrical Controls and Panels & Spare Parts



This is only a partial listing, a full catalog will be posted here in advance of the auction please call Paul Brown (203) 313-8935, pbrown@gagroup.com

Auction Powered by:
BidSpotter

Blaw-Knox 14" Dual Reel Bar-In-Coil Line

KIESERLING WDH-125 BAR PEELER

- **KIESERLING WDH-125 BAR PEELER**, 25-130mm Rough Bar Diameter, 25-125mm Finished Bar Dia., 2.25-8M Bar Length, 1-15 M/Minute Feeding Speed, 200 kW DC Cutting Head Motor, 27-75mm 1st Range Diameter, 75-125mm 2nd Range Diameter; with 35' Gravity Feed Loading Rack, Bar Indexing Feed System; with Guides and Tube Loader; Input Pinch Roll System; Exit Carriage, with Guides; Exit Roller Conveyor, with Hydraulic Dump Table; Bar Accumulator Cradle, with Load Cells and Mettler Readout System; Keyence LS-9120MR Laser Gauging System; Hydraulic Power Supply; Console Control System; and Mayfran Inclined Blt Conveyor.

To View this Machine in Operation, [CLICK HERE](#)



\$700,000 Upgrade 2019



Kieserling WDH-125 Bar Peeler

ROLL BAR STRAIGHTENERS

- **(REBUILT BY D&R IN 2017) MEECO MODEL 2R1M 4-1/2" BAR STRAIGHTENER**, Size 3; 125 hp Drive Motor; with Meeco Model HD3 13-Strand Gravity Drop Feed Conveyor System, 60' L Bar Capacity; with Pneumatic Transfer Arms; Powered Guide Rolls; Entry Table; Horizontal Hydraulic Pinch Rolls; Powered Guide Rest, with Hydraulic System; Mayfran Scale Removal Conveyor; 25 hp Hydraulic System; Vertical Hydraulic Pinch Rolls; Meeco 3SS 12-Strand Powered Exit Conveyor, with 2-Stage Accumulator; Pneumatic Kicker Arms; Control Console.

To View this Machine in Operation, [CLICK HERE](#)



- **MEDART 3-1/2" 2-ROLL BAR STRAIGHTENER**, Size 2; 60 hp Drive Motor; with 60' Gravity Feed Table with Varying Pitch; Bar Indexing Feed System; Entry Pinch Rolls; Operators Panel; Exit Pinch Roll, 3-Point Hydraulic Drop Exit Chute, with Accumulator; Control Room, with Allen-Bradley Model PanelView Plus 1000 Touch Screen PLC Control; 10 hp Hydraulic Unit; and Mayfran Inclined Metal Belt Conveyor



Auctioneer will consider pre-auction offers on select items, please contact Paul Brown at (203) 313-8935, or pbrown@gagroup.com

ELECTRIC ARC FURNACES & BILLET CASTING LINE

MANNESMANN DEMAG 220-TON ELECTRIC ARC FURNACE SYSTEM

- **MANNESMANN DEMAG 220-TON ELECTRIC ARC FURNACE**, w/24'D Shell; Water Cooled Side Panels; Oxygen Burners, 3,150°F Max. Temperature; and GE Class Flow Transformer, Rated @ 76 MVA, 24" Electrodes,
- **GE CLASS FLOW TRANSFORMER**, Rated @ 76 MVA, 24" Electrodes
- **EMCI 220-TON LADLE METALLURGY FURNACE**; 14'W x 15'H Chamber Size, 3,150°F Maximum Temperature; with 18"D Electrodes; and Tower Feed; with PX1 Upgrade;
- **ELECTRODE ARMS ARE CURRENT CONDUCTING ARMS**
- **CIS MODEL SHTD-202-24 ELECTRODE HEATING SYSTEM**
- **CENTRAL ENGINEERING GAS FIRED HORIZONTAL LADLE PRE-HEATERS**; Maximum 2,000° Temperature; with 30 hp Blowers
- **THERMAL TRANSFER PRODUCTS GAS FIRED VERTICAL LADLE PRE-HEATER**; Maximum 2,000° Temperature; with 20 hp Blower
- **BAG DUMP STATION**; with Elevator; Hoppers; Shaker & Metering Feed
- **(10) 220-TON 14'W X 15'H ELLIPTICAL HOT MELT LADLES**; with Flo-Con Bottom Slide Gates; and Thermal Vision System
- **(5) 150-TON 22'D SCRAP CHARGING BUCKETS**; 3,200 Cubic Feet Cap.
- **TRACK MOUNTED LADLE TRANSFER CARS**
- **(2) ABB 200-TON SCRAP WEIGHING SYSTEM**; Each with Radiation Detector; (Upgraded 2021)
- **(2) HUTTON 230-TON SCRAP LADLES**; Each with Ladle Transfer Cart
- **WESTINGHOUSE 76-MVA FURNACE TRANSFORMER / 66-MVA REGULATOR TRANSFORMER**
- **AMERICAN AIR FILTER 500,000-CFM DUST COLLECTORS**; Each with 1,250 hp Motor; Process Piping; and Variable-Frequency Drive, 4-Compartment Baghouse; Approximately 350,000 cfm Capacity
- **ASSOCIATED CHILLERS; HYDRAULIC SYSTEMS; PUMPS; MOTORS; PLC CONTROL SYSTEMS; CHARGE BUCKETS; CRITICAL SPARES; PULPIT TYPE TOWER OFFICE, WITH CONTROL CONSOLE; CAMERAS, WITH MONITORS; AUTOMATIC SAMPLERS; ELECT. SWITCHGEAR; AND CONTROLS**

EBT ELECTRIC ARC FURNACE

- **MANNESMANN DEMAG 120-TON ELECTRIC ARC FURNACE**; with Related EBT Shell, Roof; All Related Structure; Lift Arms; Water Cooled Cables; and Electrode Arms, (4) EAF Charge Buckets. Spare EAF Roof. Turret Gear Drive. Tamini Transformers 107 MVA EAF 3-Phase Transformer, 34.5 kV Rated Voltage

KOPPERS 6-STRAND CONTINUOUS BILLET CASTING LINE

- **KOPPERS 6-STRAND CONTINUOUS BILLET CASTING MACHINE**; 130Ton/Hour Capacity, 27' Mold Capacity; with Individual Pour Control, (6) Custom Designed & Fabricated Torch Billet Cutting and Sizing Systems; with Natural Gas/Oxygen Torch Cutters, Upgraded Mold Lube System, (30) 7" x 7" Copper x 20' Casting Billet Molds; with Stirring System, Associated Control Room; with PLC Line Controls; Monitors; and Cameras



Auctioneer will consider pre-auction offers on select items, please contact Paul Brown at (203)313-8935, or pbrown@gagroup.com

\$24 MILLION COST - MASSIVE SELECTION OF NEW SPARE PARTS AND RAW MATERIALS INVENTORY

OVER (450) GRAFTECH, TOKAI, GES, SDK GRAPHITE ELECTRODES, NEW COST \$3,000,000

To View Storeroom List Pictures & Videos, [CLICK HERE](#)



MATERIAL HANDLING, CONSTRUCTION, BOOM CRANE, ARTICULATED BOOM TYPE AERIAL LIFT

- (2) TO 2019 KALMAR DCG330-12, 72,000-LB. DIESEL LIFT TRUCK
- 2020 KALMAR DCG250 55,000-LB. DIESEL LIFT TRUCK
- (2) TO 2012 KALMAR DCD250-12, LB 55,000-LB. DIESEL LIFT TRUCK
- (2) 2012 CATERPILLAR P22000, 22,000-LB. DIESEL LIFT TRUCK
- 2023 CATERPILLAR DP50CN1, 10,000-LB. DIESEL LIFT TRUCK
- 2019 KALMAR DCG160-12 36,000 LB DIESEL FORKLIFT
- CATERPILLAR V620 57,300-LB. DIESEL LIFT TRUCK
- (8) CATERPILLAR 6,000-10,000-LB. DIESEL LIFT TRUCK
- MITSUBISHI FG25N 5,000-LB. LP GAS LIFT TRUCK
- 2014 MITSUBISHI FD40N1 8,000-LB. DIESEL LIFT TRUCK
- HYSTER H80XL 8,000-LB. LP GAS LIFT TRUCK
- (2) WALDON 8500C OLD COIL RAM TRUCK
- (2) JOHN HARDER LB WIDE CARRIAGE MASTS
- GRANT-O-MATIC GOM360BDR FURNACE WRECKER
- GROVE RT530E 30-TON ROUGH TERRAIN BOOM CRANE
- (4) TO 2019 BOBCAT T770, S175, S70 & S220 SKID STEER LOADER
- CATERPILLAR 924H ARTICULATED FRAME WHEEL LOADER
- CATERPILLAR 980F ARTICULATED FRAME WHEEL LOADER
- CATERPILLAR 924G ARTICULATED FRAME WHEEL LOADER
- GENIE S-65 DIESEL BOOM TYPE AERIAL LIFT
- JLG E300AJP ARTICULATED BOOM TYPE AERIAL LIFT
- SKYJACK SJIII-3219 MAXIMUM 550-LB. ELECTRIC SCISSOR LIFT
- HYSTER S100E 10,000-LB. LP GAS LIFT TRUCK



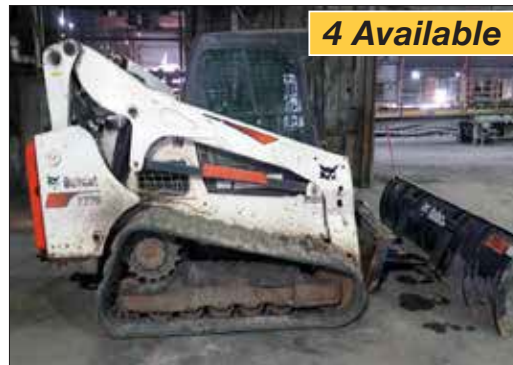
Partial View of Kalmar Lift Trucks



Partial View of Kalmar Diesel Forklifts



Kalmar DCG250-12 55,000-Lb. Diesel Lift Truck



Bobcat T770 Skid Steer Loader



Partial View of Caterpillar Wheel Loaders



Caterpillar P22000 22,000-Lb. Diesel Lift Truck



Grove RT530E 30-Ton Rough Terrain Boom Crane



Partial Overview of Material Handling

CHEM & METROLOGY LAB

- THERMO SCIENTIFIC ARL OPTIM'X WDXRF SLAG SPECTROMETER
- MIKRON DIGITAL INSTRUMENTS PSP80K 80,000-LB. PROGRAMMABLE STEPPING PELLET PRESS
- (2) LECO CS744 & CS230SH CARBON/SULFUR DETERMINATOR
- ELTRA ONH2000 NITROGEN/OXYGEN/HYDROGEN DETERMINATOR
- THERMO SCIENTIFIC ARL3460OES OPTICAL EMISSION METALS ANALYZER
- APPLIED RESEARCH LABORATORIES 3460 AES OPTICAL EMISSION SPECTROMETER
- MIKRON DIGITAL INSTRUMENTS APLASTAR 55 RING AND PUCK MILL
- STRUERS DISCOTOM-100 TABLETOP SAMPLE SAW
- TINIUS OLSEN 60,000-LB. TENSILE TESTER; WITH HANDHELD PENDANT CONTROL
- STRUERS CITOPRESS-20 2-PART MOUNTING PRESS
- OLYMPUS GX51F INVERTED METALLURGICAL MICROSCOPE
- LECO GR-20 LAB POLISHER
- BUEHLER SUPERMET 12" LAB POLISHER; LAB BENCHES, FUME HOODS, GLASSWARE

Auction Powered by: **BidSpotter**



LECO N736 Oxygen Nitrogen Analyzer



Thermo Scientific ARL Optim'X Spectrometer



Thermo ARL3460OES Optical Emission Metals Analyzer



Wilson Rockwell 2001R Digital Hardness Tester



Struers Discotom Auto. Saw



Partial View of Transformers

TRANSFORMERS

- TAMINI TRANSFORMER 107 MVA EAF 3-PHASE TRANSFORMER, 34.5 kV Rated Voltage
- (3) WESTINGHOUSE 68,000-KVA OIL FILLED TRANSFORMERS
- (4) GE / WESTINGHOUSE 66,000-KVA OIL FILLED TRANSFORMERS
- WESTINGHOUSE 52,800-KVA OIL FILLED TRANSFORMER
- (2) WESTINGHOUSE 15,000-KVA OIL FILLED TRANSFORMERS
- (7) COOPER, GE, WESTINGHOUSE, ALLIS CHALMERS, 10,000-KVA OIL FILLED TRANSFORMERS
- (50) ASSORTED TRANSFORMERS THROUGHOUT FACILITY; Sizes From 50 to 7,000 kva; Manufacturers including: Wagner, Westinghouse, Cooper, GE and Kuhlman, Allis Chalmers (Oil Filled, Silicon, Dry, & Askarel)

To View the Transformer list, [CLICK HERE](#)

For information, please contact Paul Brown
(203) 313-8935, pbrown@gagroup.com



Tamini Transformer 107 MVA EAF 3-Phase Transformer, 34.5 kV Rated Voltage

HORIZONTAL AND VERTICAL BANDSAWS / COLD SAW

- HE&M V130M 20" X 24" AUTOMATIC VERTICAL BAND SAW, 45' Heavy Duty Entry Conveyor; and 40' Exit Powered Conveyor
- 2011 DOALL 500DS 14" X 20" HORIZONTAL BAND SAW
- DOALL C-1321DS 13" X 21" HORIZONTAL BAND SAW
- DOALL C-916M 9" X 16" HORIZONTAL BAND SAW
- KALTENBACH 52" HEAVY DUTY COLD SAW

OVERHEAD BRIDGE CRANES

- CRANE MFG. 300/80/10-TON X 80' SPAN DOUBLE GIRDER TOP RUNNING LADLETYPE BRIDGE CRANE
- ALLIANCE MACHINE 300/50-TON X 80' SPAN DOUBLE GIRDER TOP RUNNING LADLETYPE BRIDGE CRANE
- ALLIANCE MACHINE 150/25-TON X 80' SPAN DOUBLE GIRDER TOP RUNNING BRIDGE CRANE
- (4) ALLIANCE MACHINE 25/5-TON X 80' SPAN DOUBLE GIRDER TOP RUNNING BRIDGE CRANES
- (2) ACCO 10-TON X 40' SPAN DOUBLE GIRDERTOP RUNNING BRIDGE CRANES
- (2) WHITING CORP. 10-TON X 100' SPAN DOUBLE GIRDER TOP RUNNING BRIDGE CRANE
- 15-TON X 65' SPAN DOUBLE GIRDERTOP RUNNING BRIDGE CRANE
- 25-TON X 60' SPAN DOUBLE GIRDERTOP RUNNING BRIDGE CRANE
- (3) 2-TON X 50' SPAN DOUBLE GIRDER OVERHEAD BRIDGE CRANE
- 3-TON X 25' SPAN DOUBLE GIRDER OVERHEAD BRIDGE CRANES
- SHAW-BOX 15-TON X 35' SPAN DOUBLE GIRDERTOP RUNNING BRIDGE CRANE

YARD TRACTORS

- (2) 2020 OTTAWA T2 4 X 2 YARD TRACTOR
- OTTAWA RJS 4 X 2 YARD TRACTOR
- OTTAWA 50 YARD TRACTOR
- (2) CAPACITY TJ5000 & TJ7000 YARD TRACTOR



2 Available

DoAll Horizontal Band Saw

VEHICLES

- (7) FORD F-150 XL PICKUP TRUCK
- CHEVROLET SILVERADO C1500 PICKUP TRUCK
- FORD F-350 XL SUPER DUTY UTILITY BUCKET TRUCK
- (3) GMC SIERRA C1500 & 2500 PICKUP TRUCK
- (2) EUCLID R22 & 207FD22-TON SINGLE AXLE DUMP TRUCK
- MERCURY GRAND MARQUES AUTOMOBILE
- MERCURY VILLAGER MINIVAN
- FORD WINDSTAR MINIVAN
- FORD F-600 2-TON FLATBED DUMP TRUCK
- GMC SONOMA EXTENDED CAB PICKUP TRUCK
- JEEP GRAND CHEROKEE SPORT UTILITY VEHICLE
- CHEVROLET C3500 FLATBED TRUCK

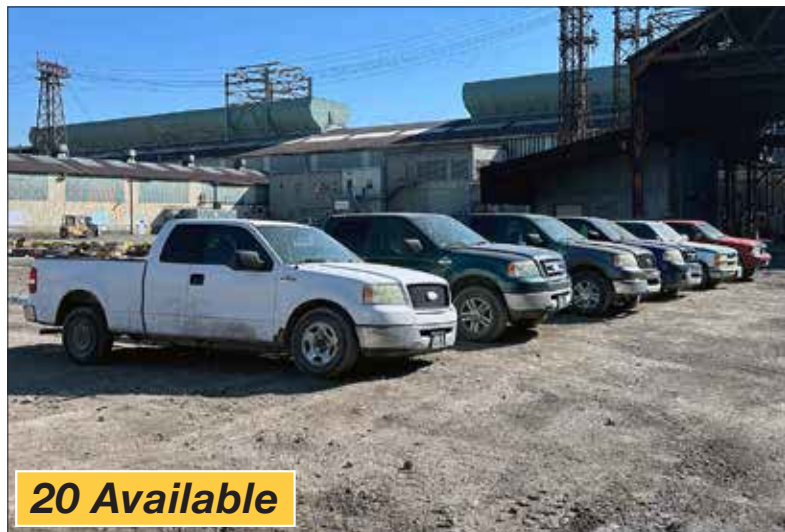
Auction Powered by: **BidSpotter**



To 2020

6 Available

Ottawa Model T2 4x2 Yard Tractor



20 Available

Ford, Chevrolet, GMC Pickup Trucks

Auctioneer will consider pre-auction offers on select items, please contact Paul Brown at (203) 313-8935, or pbrown@gagroup.com

PLANT SUPPORT / ADDITIONAL MACHINES

- 2022 GILLETTE SPVD-6000-3-4-2, 660-KW DIESEL GENERATOR
- CUMMINS DFGE-5693579 750-KW DIESEL GENERATOR
- GENERAC SG0050KG264 50-KW NATURAL GAS FIRED BACKUP GENERATOR
- (2) TOLEDO MASSTRON 160,000-LB. ABOVE GROUND TRUCK SCALE
- 2014 INGERSOLL-RAND R1101-A125 AIR COOLED ROTARY SCREW AIR COMPRESSOR, 150HP
- (25) CLUB CAR, EZ GO & YAMAHA GOLF CARTS
- 30' TO 48' BLOOMTRAILERS
- (4) INGERSOLL-RAND SSR-XF150 & SSR-EP200 ROTARY SCREW AIR COMPRESSOR, 150HP & 200HP / ZEKS DRYERS
- INFOSIGHT LL2856-3 METAL TAG LASER PRINTER
- (4) POWERBOSS, ADVANCE & AMERICAN LINCOLN RIDING FLOOR SWEEPERS

- (25) MILLER, LINCOLN, & HOBART ARC & MULTIPROCESS WELDERS
- WASTEWATER TREATMENT EQUIPMENT
- NUMEROUS SCRAPMASTER SCRAP MAGNETS / SEVERAL OHIO LIFTING MAGNETS / SPREADER BARS
- MAGNAFLUX CE-51 MAGNETIC PARTICLE INSPECTION MACHINE
- NELSON STUD WELDING 101 STUD WELDER
- KRB 18M ELECTRO-MECHANICAL REBAR BENDER, 55mm Max. Bar Size; 10 hp Motor; with KRB PLC Control
- NDT TESTING LINE; Consisting of 45' Heavy Duty Loading Rack; with Bar Indexing System; 50' Power Roller Feed Conveyor; Bar Marking System; 60' Exit Power Roller Conveyor
- SCOTCHMAN 9075 75-TON HYDRAULIC IRONWORKER
- BAR MILL ROUGHING MILL PINCH ROLL
- LARGE SELECTION OF USED SPARE MACHINE PARTS, METAL SCRAP

2022



Gillette SPVD-6000-3-4-2, 660-kW Diesel Generator



Cummins DFGE 5693579 750 KW Diesel Generator



Partial View of Magnets



KRB 18M Electro-Mechanical Rebar Bender

Auctioneer will consider pre-auction offers on select items, please contact Paul Brown at (203) 313-8935, or pbrown@gagroup.com

MAJOR 3-DAY ONLINE AUCTION

BIDDING CLOSURES: April 8, 9, & 10, 2026 at 10am CT Each Day

PREVIEW: April 6, 7, & 8, 9am–5pm CT Each Day • **LOCATION:** 5 Cut Street, Alton, IL 62002



COMPLETE CLOSURE OF A 2,000,000 SQ. FT. SBQ STEEL MILL

REGISTER TO BID ON
BidSpotter

COMPLETE CLOSURE OF A 2,000,000 SQ. FT. SBQ STEEL MILL

FEATURING:

- Bar-in-Coil Line
- Moeller Neumann Continuous Rolling Mill
- Roll Bar Straighteners
- Bar Peeler
- Chem & Metrology Lab
- Mannesmann Demag 220-Ton Electric Arc Furnace
- Material Handling
- Machine Shop
- Plant Support
- Transformers
- Large Quantity of MRO Spares / Consumables
- Overhead Bridge Cranes



Auction Managed Jointly by:



203.313.8935
gagroup.com



860.623.9060
crgllc.com

William Firestone, Auctioneer, Illinois Auction License #441000584